



Craft Potters Christmas Party

Betty Dick – Jan Moresby – Jeannine Price – Ellen Nisbet – Joy Brown – Olga Reid – Lyn Packer

EDITORIAL.

There was no issue for January for reasons that were purely personal. Derek and I offer our apologies for this but as there was no committee meeting and the holiday season was upon us it became too difficult. The spirit was still willing but circumstances overcame us. The New Year is upon us and there are future activities in the pipeline so Craft Potters has much to look forward to. The break in the work schedule for most of us has twin effects, the holiday of whatever kind gives us a rest and when we return there is a willingness to look at the year ahead and anticipate changes which may benefit us and the work we have planned.

Other countries or cities have been visited, shops and other galleries, books have been read or studied and from this we may benefit with new ideas and outlook.

With co-operation between members and that means communication, we can share and encourage one another to ever greater skills and the results may well be surprising. Craft Potters will only benefit as a club when there is a real effort to consider the welfare of all members, whether old or new, skilled or learners, clever or struggling. Let us all give to each member what is their due without demands, rewards or expectations of a return for the giving. ----- It is a New Year let us make it a Good One.



COMMITTEE NOTES (Jan. 14th)

CLASSES - Wed 5th Feb 10am sees the start of pottery classes for the year. Once again we are privileged to have Sue Newitt as our tutor. If you plan to attend, please write your name on the form attached to the notice board. Class forms will also be available there for you to fill out. These will need to be brought along, also your \$48 fee, on the first day. Available for new members beginning this year, will be starter packs and an information manual. The starter packs will contain the basic tool kit for you to begin with.

These cost \$10 and the manual \$5. They are optional.

As the cost of classes has risen, and we have not for many years increased the fees, after discussion it was decided to compromise by discontinuing the free kiln firings that have been provided for a few years and allow the fees to remain the same.

CLASS SECRETARY – This position is available. If interested please read the following and get in touch with Uta Calver. (phone 541-8953)

Guidelines for class secretary:

- First and foremost – help the tutor in administrative matters.
- Collect class fees at first class meeting. Ensure fees are not outstanding.
- Organise class firings, help with loading and firing, collect the firing fees.
- If you do not as yet have your Kiln Certificate please speak to Amy Meikle who will be happy to help and teach you there are members in the class who already hold certificates and they too will be prepared to assist. All friends here! Ensure pots are being paid for in accordance with agreed method of charging
- Recognise anybody who attends the permissible first two free class sessions if they are interested in being a member. Make sure they attend only two sessions before joining the club and having their application for membership approved by the committee. Any pots made during those 2 lessons will be charged for when fired.
- Be conversant with information as to where to purchase clays, tools and other pottery materials.
- Ensure pots are not long-term on shelves.
- Ensure slops are taken home after class as well as clay. Clay may be left in fridge outside.
- Collect money for the provision of tea, milk and coffee for the class only and see this is available at each session.

In return, the class secretary is only required to pay a \$10 class fee for the year.

This is a wonderful opportunity to get to know members of the club especially new members. In the past it has been a great way to make friends in the pottery world.

A good reason for having a new secretary each year

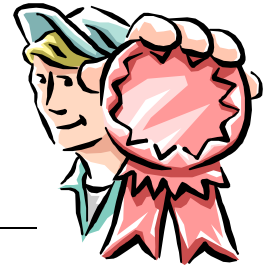
SATURDAY CLASS The 15th February is the date set for the Saturday morning class which will be taken by Rodger Fowler again this year. Good luck and good potting!

SPECIAL GENERAL MEETING – this will be held on Sat 1st March at 4pm. At this meeting we will discuss and approve changes to the Constitution {Rules of Craft Potters Nelson Inc}. It is important that you attend, as any changes will affect all

members. There are constant rumours that members do not attend general meetings and are not interested, merely want to use the club facilities and let others do the organizing. I personally do not agree with the rumours but feel it is necessary to emphasize that this particular meeting is of such importance that no member should not attend unless they are unable to do so. It is pointless to constantly make complaints if on the few occasions you are allowed to express an opinion you do not turn up. Editor

A BIG BIG THANK YOU from the Committee to *Betty Dick* and her helpers for the tremendous amount of work that was put into organizing Craft Potters Trade Stall at the recent A&P Show. For those of you who don't know, the stall won Best Small Trade Exhibit. As well, we had a lot of interest shown in either joining our club or in our work that was on display.

A very successful weekend for Betty and Craft Potters .



Wayne Price

SLIP CASTING WORKSHOP – this will be held on Sun 16th Feb beginning at 10am and finishing at 3pm. Wayne Price will be your tutor for the day. There is an information sheet with the equipment that you will need to bring along attached to the notice board. Cost for the day will be \$5 – very affordable. Wayne is also willing to pit fire any pieces that you may want to fire in this way. For this last activity to happen, he will need volunteers, so those of you willing to help please do so.

'MUGS, MUGS, MUGS' – for the JUNE CENTRE TABLE we plan to display MUGS. ALL club members are invited to participate by creating a special mug. Use your imagination – they can be handmade, thrown, whimsical etc. Also they don't need to be functional. You don't need to be already selling in the Gallery to join in. If your mug is not up to the selling quality, don't worry. We can put a “**not for sale**” sticker on it. There will be a prize for the most interesting mug, donated by Jeannine Price. Your entry/entries will need to be at the club {behind the curtain, round the back} by Thurs 29th May. As you can see, you have plenty of time to think about what you want to do, and also there will be no excuse for not being able to sleep at night due to overworked creative brain activity.

PUBLIC CLASSES – The possibility of single sessions for members of the public has been suggested. At the Open Day several people asked about this. A member who is reasonably competent in the pottery field is needed from among our group to tutor this. Classes would be on a weekly basis for a minimum of one term and there would be payment to the tutor for this. Contact Uta Calver (Phone 541-8953)

ROTARY CLUB Richmond propose to have a "Country-a-Fair" on Sun. 23 February at the Richmond Showgrounds. They expect to have private and commercial stalls, buy-sell-swap, food stalls, displays, ?Police and Fire Service demonstrations, 2 auctions with an outdoor recreation and sporting theme, environmental information and education, vintage car display, arts and crafts, viticulturists.

Site fee \$15, if electricity another \$15

If members are interested please put note into "Suggestion Box" before next committee meeting (18 Feb.) or ring Rodger or Uta and express what you wish to do - sales table? demonstrate? on wheel or hand work? If sufficient interest we will book a site. You could also book your own site.

NEW MEMBER

Ms Barbara Irving P.O. Box 3307 Richmond (lives on Best Island)

ph. 544.5925, e-mail: BIRVING@xtra.co.nz

EXHIBITION Lynda Lines would like to know if there is anyone interested in helping her to set up an exhibition to be held in February 2004. This is in the pipe line at the moment.

BUS TRIP TO KAIKOURA

There will be a bus trip to Kaikoura on 8th and 9th March. Put your name on the list on the notice board so that accommodation can be arranged. The deposit of \$35.00 per person is required and will confirm the booking on or before 15th of February. I am sure this trip will be as up to standard as all the trips arranged by Betty Dick have been so far. Have yourself a great weekend and put your name down as soon as possible, or phone Betty at 544-1193.

SECURITY

With the warmer summer weather there is a tendency to open all the windows when on roster or working at the shed. PLEASE CLOSE ALL THE WINDOWS AND DOORS WHEN CLOSING UP. Also when opening up the shed for the first time in the day it is wise to shut and lock the side door as soon as you are inside. This door is often forgotten and some members have found windows and that door still open at the end of the day. Definitely a NO NO!!!! Please be careful folks!

COMMITTEE MEETINGS Will be held on the 3rd Tuesday morning of each month where possible. Meetings are held at the shed. Members should note that out of courtesy you should not use noisy equipment while these meetings are in progress. If in doubt about dates please phone the President for confirmation.

GALLERY → (Major Changes are being Proposed)

On Thursday February 13th at 9.30.a.m. there will be a meeting for discussion regarding the future of the Gallery. This meeting will not have the authority to pass any rules (or rescind them) but any suggestions will be put forward to the Committee and to the General Meeting if necessary for proposals and acceptance. What is needed here are ideas for improvements and especially for the possible involvement of those selling their pots to get together on a regular basis regarding methods of display. We are sure there is a lot that could be done and we need to examine any new ideas together to see what we can come up with. Again co-operation is the watchword.

ROSTER

Joan Maggs has been overseeing the roster for three months and informs me she is happy to continue to do this job. The committee have expressed their opinion she should continue and are happy with the situation as it is at present. Thanks from Joan for the support, especially to all those who do gallery roster over and above what is required. If you have any difficulties ring Joan Ph, 544-0115.

Members who man the gallery please note that on the first day of each month we must start the month with a Sales Sheet **numbered 1**. This is to accommodate the keeping of records on the computer, as each page is entered separately and in sequence. Thank you. Maggie

Plagiarism. Concerning the copying of the work of other potters. There is no doubt in the minds of anyone that plagiarism is unacceptable. Lyn has stated she will not allow pots to be sold under our name if they are blatantly copies of another potter's work, even if that potter is not a member of Craft Potters.

Quality control – Every now and then some helpful person will find a piece in the Gallery that is not up to standard {their opinion}, and put it round the back with a note of explanation. Unfortunately they do not add their signature to it. I am quite happy for the help to continue as I'm not infallible. But PLEASE do sign the note that you leave with the pot. Thank you! *Lyn Packer* – Quality Controller.

Anonymous notes.

Craft Potters Committee wish to make it known that anonymous notes of any kind will not be accepted.

GLAZE WORKSHOP WITH LAWRENCE EWING

Craft Potters are hoping to organize a workshop with Lawrence Ewing. This workshop will be open to **all potters** in the Nelson region. There is a list on the notice board at the shed and you may add your name to this if you wish to participate. The more members who sign up the cheaper it will be, so look lively!

You may also put your name forward by phoning Lynda Lines phone 543-2791 or Uta Calver, phone 541-8953 (secretary).

This weekend workshop is quote “to allay fears that glaze chemistry is too difficult or too technical”. Everyone will come away with more knowledge than they had before and the ability to use that knowledge.

We are lucky to have a person with the background of Lawrence Ewing,

(we have one of his pots in our permanent exhibition), and the capacity to translate it into understandable terms to start us on the glaze trail so many find a bit slippery.

Please give this some serious thought. Information will be forthcoming when the weekend is established. Pamphlets at the shed for all to see.



NOTES FOR LEARNERS

Do you just want to just make pots or do you want to be a good potter? You can go to the wheel every time to make a pot or you can use some of that time to practice good potting techniques. When you are learning to play a musical instrument every session at the piano doesn't have to be a recital.

Each throwing session use PART of your time to work on technique.

Wedge 10 one pound balls of clay and throw the tallest evenest cylinder that you can, time limit 3 minutes each. Don't trim ,finish or decorate. Just rewedged. Next session repeat with larger amounts. Throw a thick cylinder of 4 or 5 pounds. Use the top 1/4 to pull the best neck you can, cut it off. Do it again and again until you use up the whole cylinder.

I'm sure others will suggest other good exercises and you won't waste so much time turning and decorating bad pots. **Judi Buchanan (ClayArt)**

ROSE DAY

Broadgreen Society Committee together with the N.C.C. are in the process of putting together their next Rose Day on Sun 9th February. CPN are invited to participate – at a charge of \$15 per. site. If anybody is interested to set up a sales table, or demonstrations, please phone 541-8953 Uta. They anticipate to have lots of entertainment and approx. 50 art and craft stalls.

TEXT BOOKS AND THE INFORMATION THEY CARRY.

I recently read a letter from Ron Roy a well known Toronto Potter and part author of a book on cone 6 glazes. He was discussing the drawbacks of some of our older text books claiming that many older texts are downright misleading.

This may in some instances be true as the craft of pottery has come a long way, especially technically. We must have that basic knowledge that came from those early potters such as Leach and the books written by him. We must also read the more recent texts.

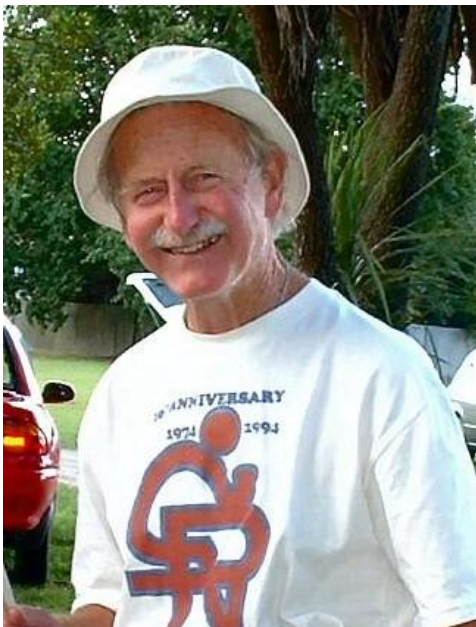
Ron says “If we don't have enough understanding we are at the mercy of those authors who simply pass on the same old simplistic answers - many of which are over simplifications and some downright false.”

There is better information for potters now, than there ever has been. The information is more complete and the subject matter more extensive.

We can evaluate the texts we use to try to improve our understanding. The better the materials are explained the better our chances of improving on our information.

CRAFT POTTERS. SOME SUGGESTIONS FOR 2003.

Ever since Craft Potters began the Group its members have used various stoneware clays as the mainstay for making pots and for teaching. In the early days that's all there was, and the quality of the clay was not near as good then as it is today. Most of the firing was done in fuel-fired kilns (diesel) and some in electric kilns. So most of our pots were fired in reduction kilns.



Bob Heatherbell

Since coming to the Ranzau Road premises most of the pots produced have been fired in oxidising electric kilns. It is my opinion that stoneware clays containing iron, and virtually all of them do, should be fired in a reduction kiln to attain the best quality and strength. Electric firing is much less forgiving when it comes to glaze fit, and the pots just don't have the same strength and that satisfying ring to them as when fired in the gas kiln for instance. And many of the glazes that are available leave much to be desired.

In a group like Craft Potters where people are learning to make pots, that is their main focus. It seems to take a lot longer for them to learn how to use properly and care for equipment such as kilns. The electric kilns get heavy use, and being fired up to stoneware temperatures shortens their life considerably, especially the elements.

The work coming out from them is very variable which is to be expected I suppose. Glazes are a bit of a mystery to new potters and looking at all those buckets ?????? What to choose? In my view all those glazes should be reviewed, and only half a dozen of the most useful retained.

The arrival of the comparatively new white clays has changed the whole face of potting, giving it a bright new persona. It's available in quite a wide firing range, from about 1140°C right up to stoneware temperatures of 1300°C. The most used are what's called the mid fire range of clays that are fired up to about 1200°, i.e.; Mac's White, Abbot's White, and Potters Clays Mid Fire White. I notice that many in the Group are using these clays in preference to the traditional stoneware clays, even people in the classes, and I have to admit that the white clays are not the easiest to learn with. This of course brings a whole change to the way decoration is done, from on glaze to underglaze. With underglaze decoration preferably done on the raw clay prior to bisc firing.

I have some suggestions to make for introduction in 2003.

1. Change the present emphasis on the use of native stoneware clays to that of using the new white clays. This should also apply to the classes, with mid fire white clays being supplied for class use. Traditional stoneware clays should still be used when thought to be preferable for reduction firing or larger work. The white clays can be fired in either oxidation or reduction without being affected, but are usually not suitable for some of the older style glazes.
2. Review all the buckets of glaze that are presently available for use. Keep about six of the most useful and get rid of the rest of them. Then put a much clearer identification on each one. In my view all that is needed is about six glazes for stoneware/reduction glazing, and develop another six glazes for use on white mid fire clays, also clearly marked.
3. Consider restricting the firing of the electric kilns to cone 6 (1220°), and firing the stoneware clays in the gas kiln. This would significantly lower the costs of firing and the wear and tear on the kilns. Firing the electric kilns up to stoneware temperatures shortens the element life considerably. Firing work in a gas kiln would give people an experience in another way of firing other than just pressing a button on a controller.
4. Now on another topic altogether. This is about the dangers of driving a vehicle on Craft Potters premises. There are no traffic rules or directions whatever, and its possible to drive any which way you like. No one has had a prang yet that I'm aware of, but I wonder if it would be a good idea to have an indicated direction as to which way cars should drive around the building. The corners at the end of the building are a bit blind for speedy drivers.

So take care and look forward to all those great new pots you intend to create in 2003.

Best Wishes from *Bob Heatherbell*

Editor's Note

It has been hard to get back in the groove again, have not thrown a pot for myself since the beginning of December. Have got withdrawal symptoms in a big way. I am sure you all know what it feels like. That first lump of clay rising between the fingers will really feel good. Best of potting to you all.



Maggie Editor

Deadline

As previously mentioned Committee meetings are on the 3rd Tuesday each month and I expect information for the Pot Chatter to reach me from the Committee within not more than 2 days of that meeting.

Thus the next **DEADLINE** for next month is **21st of FEBRUARY**. Articles or announcements not formulated by the Committee however do not need to be left until then, it becomes frustrating when everything is left till the last minute. Time and space permitting we do what we can, email is good but hand written information has to be typed up by someone. Up to now Uta and Lyn have volunteered to put letters on to email for me and I really appreciate their help.

You might be a Potter

If the following words:- orange peel, salt, and cone do NOT make you think of food.

QUOTE "Quality is never an accident; it is always the result of high intention, sincere effort, intelligent direction and skillful execution." Will A. Foster.



Craft Potters members indulging in their second most favourite pastime

HAVEN COMPUTERS
Brian Chapman
265 Queen St
P.O. Box 3290, Richmond, Nelson
brian@haven.co.nz www.haven.co.nz
Ph: (03) 544 1777 Fax: (03) 544 7773

The printed copies of this newsletter are produced by courtesy of and with the co-operation of ----

"Haven Computers"
Queen St. Richmond.

Dates : Gallery meeting regarding the future ?????? on Thursday 13rd February at 9.30am
Classes Start Feb. 5th at 10am ----- Saturday Class Feb. 15th
Broadgreen Rose Day on Sun 9th February see page 6
Slip Casting Workshop Sunday 16th Feb
Rotary Club "Country-a-Fair" on Sunday 23rd Febuary see page 3
Special General Meeting Saturday 1st March It is important that you attend as we will be changing the [Rules of Craft Potters Inc.] ie The Constitution
Bus Trip trip to Kaikoura on 8th and 9th March (page 4)